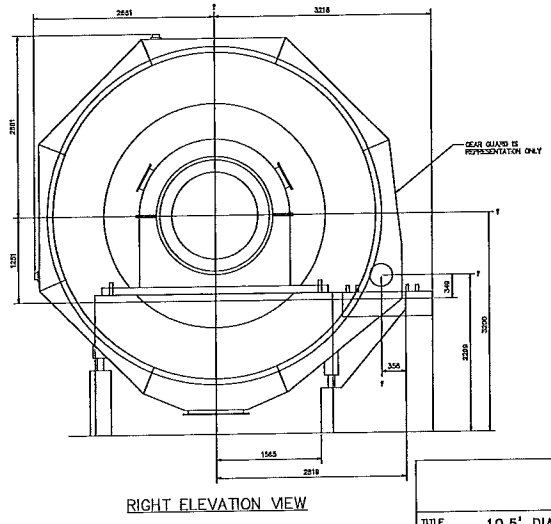
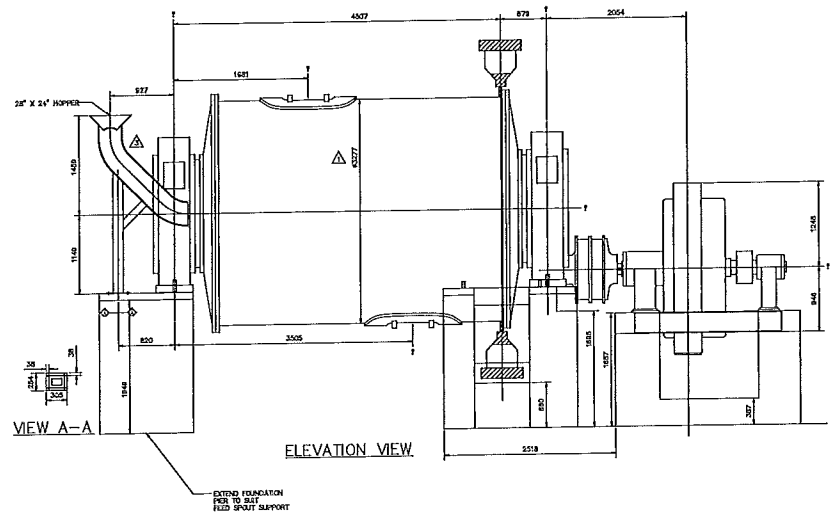


DRAWING NOTES:
 -- FOUNDATION BY OTHERS

DRIVE SPECIFICATIONS:
 MOTOR
 700HP ALLIS CHALMERS
 SYNCHRONOUS MOTOR
 4000V/3PH/60HZ
 240 RPM, 80.3AMPS
 BRUSH MOTOR
 △ (EXCITATION 250V
 32 AMPS AT RATED LOAD)
 CLUTCH
 △ 28V0650 DUAL CLUTCH
 C/W AXIAL LOCKING DEVICE

△ WEIGHT SUMMARY
 △ MILL = 168,700 LBS / 76,521 KG
 PINION SHAFT ASSEMBLY = 4,800 LBS / 2177 KG
 TOTAL WEIGHT = 173,500 LBS / 78,700 KG
 ABOVE WEIGHTS ARE APPROXIMATE ONLY.
 DEAD LOAD ONLY.



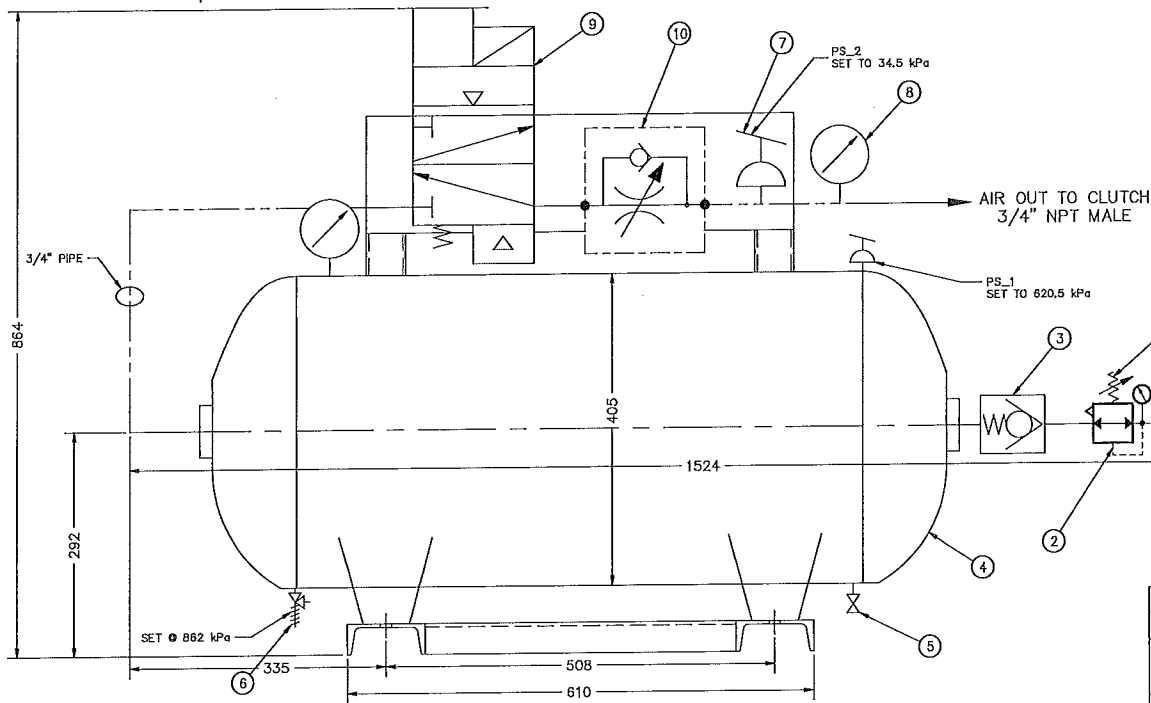
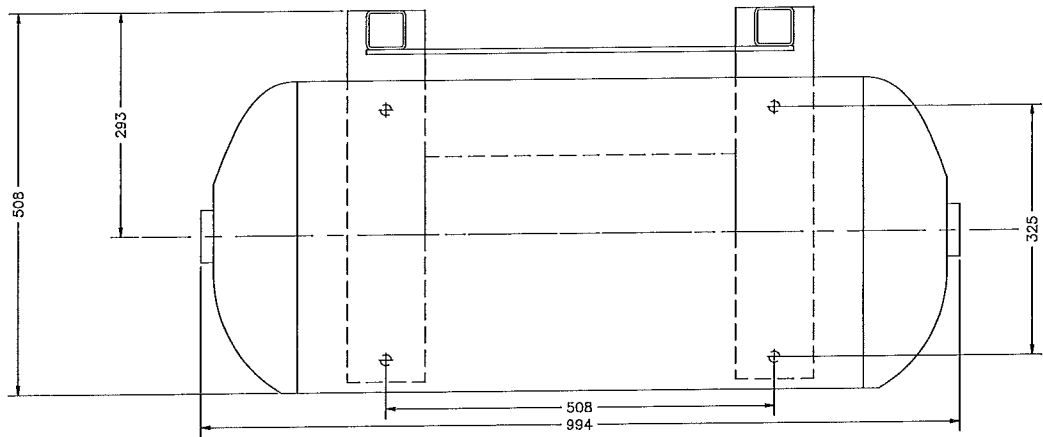
CUSTOMER EQUIPMENT #: E01-MIL-004

TITLE 10.5' DIA. X 14' LG. ALLIS-CHALMERS ROD MILL
 GENERAL ARRANGEMENT DRAWING

REV	DESCRIPTION	BY	DATE	CHK
2	REVISED TO METRIC AND AS PER MARKUPS	SM	06/03/08	AC
1	REVISED TO METRIC AND AS PER MARKUPS	ME	05/06/08	AC
0	RELEASED TO CUSTOMER	ME	04/24/08	AC
3	ADD FEED SPOUT DETAILS	AC	8/15/08	BK

NOTE: THIS DRAWING CONTAINS PROPRIETARY INFORMATION ALL THE DESIGN AND DETAIL SHOWN ON THIS DRAWING ARE THE PROPERTY OF WESTPRO MACHINERY INC. AND ARE CONFIDENTIAL. THIS DRAWING MAY NOT BE COPIED, OR DISCLOSED TO OTHERS WITHOUT THE WRITTEN PERMISSION OF WESTPRO MACHINERY INC. ALL PATENT AND DESIGN RIGHTS ARE RESERVED.

DRAWN	CHECKED	PROJ. No.	CSY2163
ME	AC	DATE	04/03/08
		SCALE	NTS
		DWG. NO.	2163-1-0
		REV.	3



BILL OF MATERIALS				
ITEM	DESCRIPTION	QTY.	PART #	REF DWG #
1	FILTER	1	2163-2-4-7	2163-2-4-0
2	REGULATOR	1	2163-2-4-8	2163-2-4-0
3	CHECK VALVE	1	2163-2-4-10	2163-2-4-0
4	AIR RECEIVER TANK	1	2163-2-4-13	2163-2-4-0
5	DRAIN VALVE	1	2163-2-4-16	2163-2-4-0
6	RELIEF VALVE	1	2163-2-4-15	2163-2-4-0
7	PRESSURE SWITCH	2	2163-2-4-4	2163-2-4-0
8	PRESSURE GAUGE	2	2163-2-4-3	2163-2-4-0
9	3 WAY SOLENOID VALVE	1	2163-2-4-6	2163-2-4-0
10	FLOW CONTROL VALVE	1	2163-2-4-5	2163-2-4-0

CUSTOMER EQUIPMENT # E01-MIL-004
 WEIGHT - 100 kg (APPROX.)

FABRICATION NOTES & TOLERANCES
 (UNLESS OTHERWISE SPECIFIED)
 BREAK ALL SHARP EDGES
 AND CORNERS 0.015 MIN.

X.XX ± 0.01
 X.XXX ± .005

FRACTIONAL ± 1/16
 ANGLES ± 1°

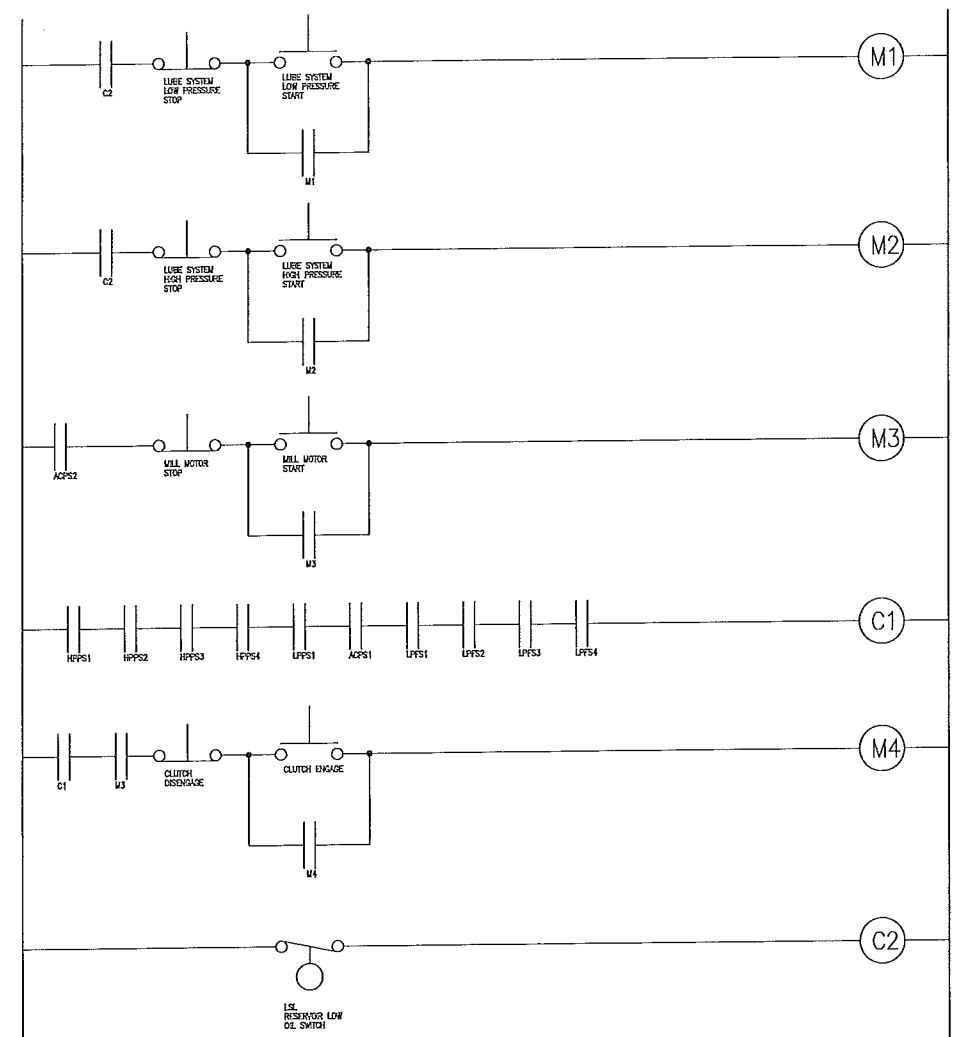
TITLE 10.5' X 14' ALLIS CHALMERS ROD MILL
 CLUTCH AIR CONTROL SYSTEM

NOTE: THIS DRAWING CONTAINS PROPRIETARY INFORMATION
 ALL THE DESIGN AND DETAIL SHOWN ON THIS DRAWING
 ARE THE PROPERTY OF WESTRO MACHINERY INC. AND
 ARE CONFIDENTIAL. THIS DRAWING MAY NOT BE COPIED,
 OR DISCLOSED TO OTHERS WITHOUT THE WRITTEN
 PERMISSION OF WESTRO MACHINERY INC. ALL PATENT AND
 DESIGN RIGHTS ARE RESERVED.

DRAWN AC
 CHECKED BK

PROJ. No. CSY2163
 DATE 08/22/08 SCALE NTS
 DWG. NO. 2163-2-4-0 REV. 2

No.	REVISIONS	BY	DATE	CHK
1	REVISED PER CUSTOMER MARKUPS	AC	9/16/08	BK
0	SHOPDRAWING	AC	08/22/08	BK
2	REVISED PER CUSTOMER MARKUPS	AC	02/02/09	RI



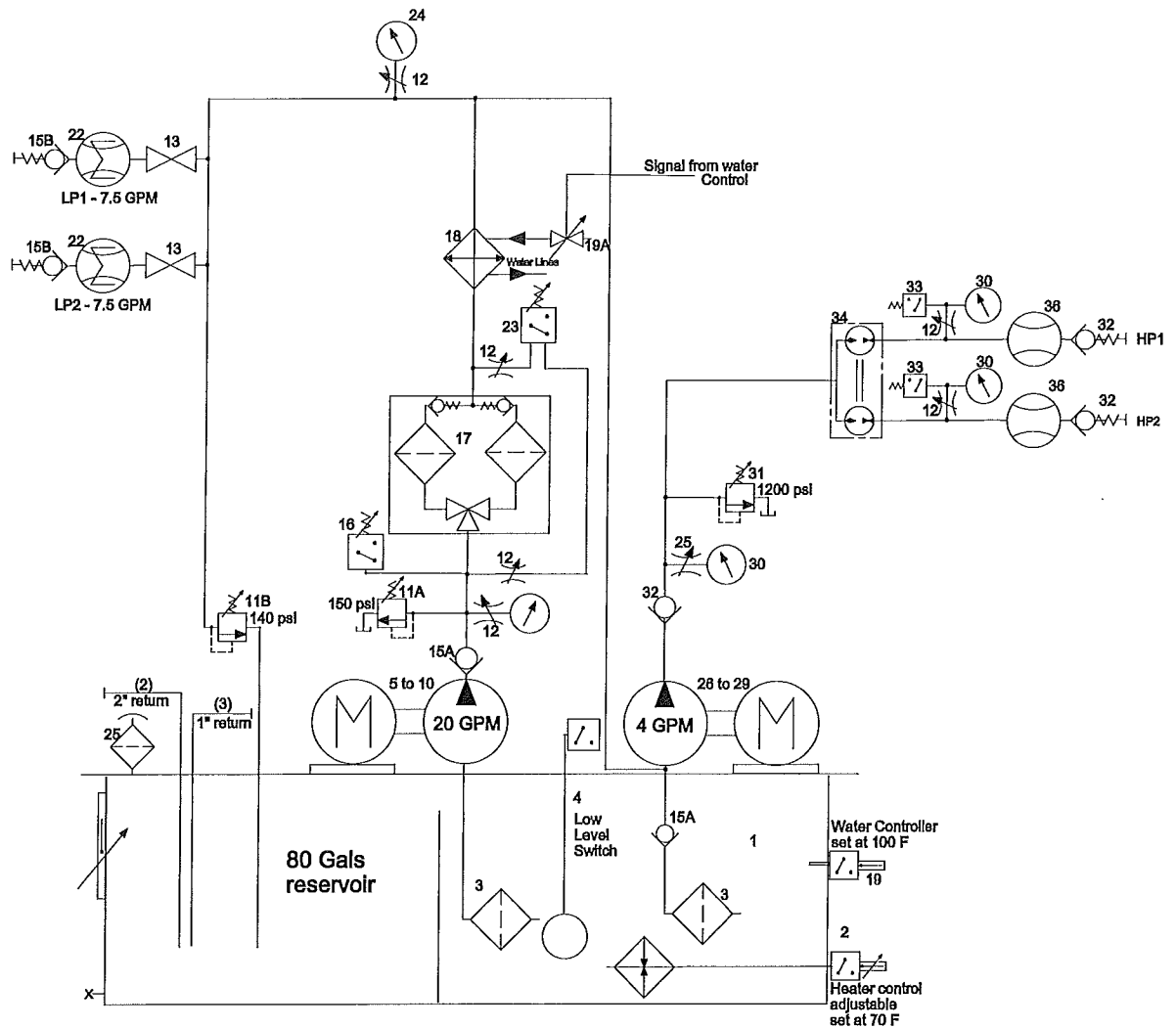
SWITCH LEGEND				
ITEM	DESCRIPTION	QTY.	PART #	REF DWG #
1	HPPS1 - HIGH PRESSURE LUBE SYSTEM	1	2163-13-33	2163-13-0
2	HPPS2 - HIGH PRESSURE LUBE SYSTEM	1	2163-13-33	2163-13-0
3	LPFS1 - LOW PRESSURE LUBE SYSTEM	1	2163-13-16	2163-13-0
4	LPFS1 - TRUNNION BEARING LUBE FLOW 1	1	2163-13-22	2163-13-0
5	LPFS2 - TRUNNION BEARING LUBE FLOW 2	1	2163-13-22	2163-13-0
6	ACPS1 - AIR CONTROL PRESS. SW. 1	1	2163-2-4-5	2163-13-0
7	ACPS2 - AIR CONTROL PRESS. SW. 2	1	2163-2-4-5	2163-13-0

DRAWING NOTES:

- THIS DRAWING IS TO BE USED IN CONJUNCTION WITH 2163-2-4-0 & 2163-13-0
- THIS IS A SUGGESTED LOGIC DIAGRAM FOR CLUTCH & MOTOR CONTROL INTERLOCK, ALL PROGRAMMING AND OPERATOR PANELS ARE TO BE SUPPLIED BY CUSTOMER.
- CUSTOMER IS TO VERIFY LOGIC IS CORRECT BEFORE OPERATING MILL

FABRICATION NOTES & TOLERANCES (UNLESS OTHERWISE SPECIFIED)				TITLE LOGIC DIAGRAM GRINDING MILL CLUTCH AND MOTOR INTERLOCK			
BREAK ALL SHARP EDGES AND CORNERS 0.015 MIN.							
X.XX ± 0.01	FRACTIONAL ± 1/16	DRAWN AC		CHECKED CC		PROJ. No. CSY2171	
X.XXX ± .005	ANGLES ± 1°					DATE 9/10/08	SCALE NTS
NOTE: THIS DRAWING CONTAINS PROPRIETARY INFORMATION ALL THE DESIGN AND DETAIL SHOWN ON THIS DRAWING ARE THE PROPERTY OF WESTPRO MACHINERY INC. AND ARE CONFIDENTIAL. THIS DRAWING MAY NOT BE COPIED, OR DISCLOSED TO OTHERS WITHOUT THE WRITTEN PERMISSION OF WESTPRO MACHINERY INC. ALL PATENT AND DESIGN RIGHTS ARE RESERVED.				DWS. NO. 2163-2-4-3		REV. 1	

No.	REVISIONS	BY	DATE	CHK
1	REVISED PER CUSTOMER MARKUPS	AC	02/02/09	RJ
0	REFERENCE DRAWING	AC	9/16/08	BK



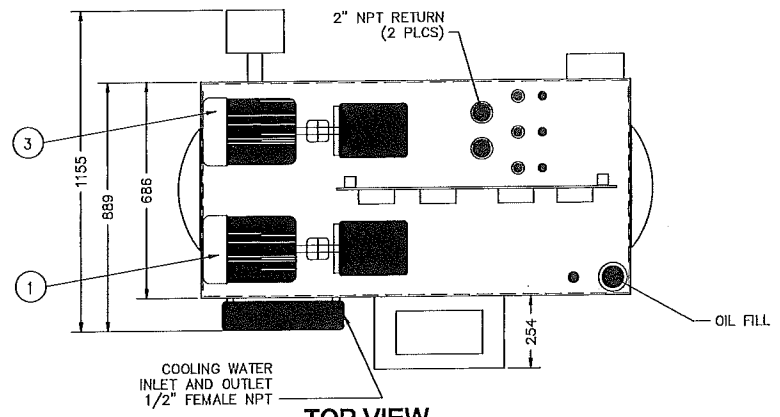
ITEM	PART #	QTY.	DESCRIPTION
LOW PRESSURE			
1	2163-13-1	1	RESERVOIR
2	2163-13-2	2	HEATER
3	2163-13-3	2	STRAINER
4	2163-13-4	1	LEVEL SWITCH
5	2163-13-5	1	GEAR PUMP
6	2163-13-6	1	PUMP/MOTOR ADAPTER
7	2163-13-7	1	COUPLING HUB
8	2163-13-8	1	COUPLING HUB
9	2163-13-9	1	COUPLING INSERT
10	2163-13-10	1	NETUR
11	2163-13-11	2	RELIEF VALVE
12	2163-13-12	9	NEEDLE VALVE
13	2163-13-13	2	BALL VALVE
14	2163-13-14		
15A	2163-13-15A	4	CHECK VALVE
15B	2163-13-15B	2	CHECK VALVE
16	2163-13-16	1	PRESSURE SWITCH
17	2163-13-17	1	FILTER ASSY.
18	2163-13-18	1	HEAT EXCHANGER
19	2163-13-19	1	TEMPERATURE SWITCH
19A			COOLING VALVE
21	2163-13-21		
22	2163-13-22	2	FLOW METER
23	2163-13-23	1	DIFFERENTIAL PRESSURE SWITCH
24	2163-13-24	3	PRESSURE GAUGE
25	2163-13-25	1	BREATHER KIT
HIGH PRESSURE			
26	2163-13-26	1	GEAR PUMP
27	2163-13-27	1	MOTOR ADAPTER
28	2163-13-28	1	ADAPTER
29	2163-13-29	1	MOTOR
30	2163-13-30	3	PRESSURE GAUGE
31	2163-13-31	1	RELIEF VALVE
32	2163-13-32	3	CHECK VALVE
33	2163-13-33	2	PRESSURE SWITCH
34	2163-13-34		FLW DIVIDER
35	2163-13-35		
ELECTRICAL			
37	2163-13-37	1	ENCLOSURE, ELECTRICAL
37A	2163-13-37-1	1	BASEPLATE, ELECTRICAL
38	2163-13-38	10	TERMINAL BLOCKS, ELECTRICAL
39	2163-13-39	2	FLW METER, ELECTRICAL
40	2163-13-40	4	ELECTRICAL

CUSTOMER EQUIPMENT #E01-LUB-014 FOR EQUIPMENT #E01-MIL-004

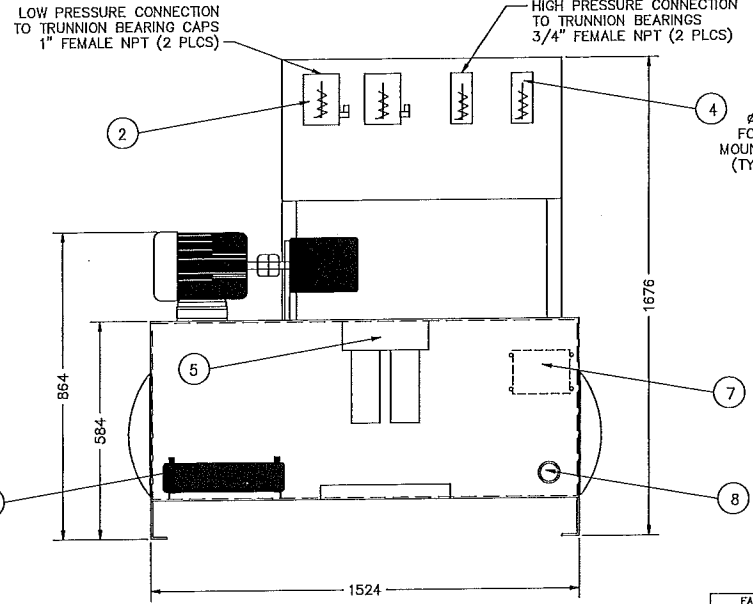
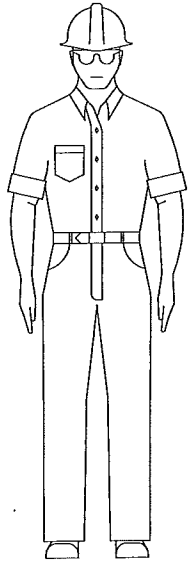
TITLE		RM10514	
LUBRICATION SYSTEM SCHEMATIC			
CLIENT			
DRAWN	CHECKED	PROJ. No.	2163
ME	AC	DATE	02/11/08
		SCALE	NTS
		DWG. NO.	2163-13-0
		REV.	2

No.	AS-BUILT	AC	9/16/08	BK
1	CORRECTIONS MADE WHERE NOTED	KM	08/05/08	AC
0	RELEASED FOR RFQ	ME	02/11/08	AC
No.	REVISIONS	BY	DATE	CHK

NOTE: THIS DRAWING CONTAINS PROPRIETARY INFORMATION ALL THE DESIGN AND DETAIL SHOWN ON THIS DRAWING ARE THE PROPERTY OF WESTRO MACHINERY INC. AND ARE CONFIDENTIAL. THIS DRAWING MAY NOT BE COPIED, OR DISCLOSED TO OTHERS WITHOUT THE WRITTEN PERMISSION OF WESTRO MACHINERY INC. ALL PATENT AND DESIGN RIGHTS ARE RESERVED.



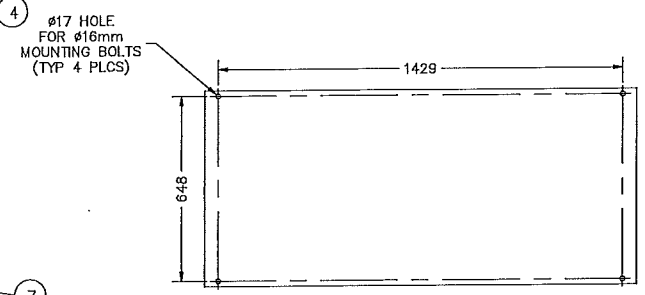
TOP VIEW



OPERATOR SIDE - FRONT VIEW

BILL OF MATERIALS				
ITEM	DESCRIPTION	QTY.	PART #	REF DWG #
1	LOW PRESSURE PUMP & MOTOR ASSY	1	2163-13-5	2163-13-0
2	LOW PRESSURE FLOWMETERS	1	2163-13-22	2163-13-0
3	HIGH PRESSURE PUMP & MOTOR ASSY	1	2163-13-26	2163-13-0
4	HIGH PRESSURE FLOWMETER	1	2163-13-36	2163-13-0
5	DUPLEX FILTER ASSEMBLY	1	2163-13-17	2163-13-0
6	WATER/OIL COOLER	1	2163-13-18	2163-13-0
7	ELECTRICAL JUNCTION BOX	1	2163-13-37	2163-13-0
8	TANK HEATER	1	2163-13-2	2163-13-0

NOTE: LUBRICATION SYSTEM MUST BE MOUNTED BELOW THE LEVEL OF THE TRUNNION HOUSING OUTLETS



ANCHOR BOLT PLAN

EQUIPMENT # E01-LUB-014 FOR E01-MIL-004
WEIGHT - 615kg (APPROX. WITH 80 GAL. OIL)

FABRICATION NOTES & TOLERANCES
(UNLESS OTHERWISE SPECIFIED)
BREAK ALL SHARP EDGES
AND CORNERS 0.015 MIN.

X.XX ± 0.01
X.XXX ± .005

FRACTIONAL ± 1/16
ANGLES ± 1'

TITLE
DIMENSIONAL DRAWING

10.5' X 14' ROD MILL LUBRICATION SYSTEM

No.	REVISIONS	BY	DATE	CHK
2	REVISED PER CUSTOMER MARKUPS	AC	02/02/09	AC
1	REVISED PER CUSTOMER MARKUPS	AC	9/16/08	BK
0	REFERENCE DRAWING	AC	8/14/08	BK

NOTE: THIS DRAWING CONTAINS PROPRIETARY INFORMATION ALL THE DESIGN AND DETAIL SHOWN ON THIS DRAWING ARE THE PROPERTY OF WESTRO MACHINERY INC. AND ARE CONFIDENTIAL. THIS DRAWING MAY NOT BE COPIED, OR DISCLOSED TO OTHERS WITHOUT THE WRITTEN PERMISSION OF WESTRO MACHINERY INC. ALL PATENT AND DESIGN RIGHTS ARE RESERVED.

DRAWN
AC

CHECKED
BK

PROJ. No. CSY2163

DATE 8/14/08 SCALE NTS

DWG. NO. 2163-13-0 REV. 2